

Galaxy PROJECT

DATA DRIVEN RESEARCH FOR EVERYONE

Galaxy is an open platform for FAIR data analysis enabling accessible, reproducible, and transparent computational research

ACCESSIBLE

Users can easily configure and run tools without the need to write code, all via a user-friendly web-based interface

REPRODUCIBLE

Galaxy captures metadata required for users to understand and reproduce the computational analysis

TRANSPARENT

Users can extract, share and publish analyses via interactive, web-based documents that can enhance analyses with user-supplied annotation

SCALABLE

Galaxy scales for thousands of users, running on a local computer, a large cluster or even the cloud



DATA ANALYSIS FOR ANY SCIENTIST

No programming knowledge required - Access Galaxy, its tools, and workflows with a web browser

Powerful computational infrastructure - Access to 8000+ tools through the Galaxy ToolShed

For beginners to advanced users - Programmatic access via API to leverage usage of computational resources, storage, and automation beyond the visual interface

EXPAND THE REACH OF YOUR TOOLS

Customise your workspace - Have your tools in private instances and streamline your group's efforts

Share your tools & knowledge - Allow 100+ public servers and thousands of users worldwide access to your tools by adding them to the Galaxy Tool Sheds

TAKE AND OFFER STEP-BY-STEP TRAINING

Access a wealth of training - Hands-on material for both starting and advanced researchers through the Galaxy Training Network (GTN)





Learn alone or train together - Tutorials designed for self-training and for workshops

Become part of the community - Worldwide training events with 1000+ registrations allowing extensive networking opportunities

CONTAINERIZATION FOR SENSITIVE DATA

Deploy it anywhere - Deploy a production-ready, scalable Galaxy instance, just by launching a Docker container

Keep it secure - Make use of the Galaxy capabilities without the need to move your data

-  Thousands of documented and maintained tools
-  Free registration
-  50GB of storage, more on request
-  On demand training capacity

READY-TO-USE



SCAN HERE

[HTTPS://USEGALAXY.BE](https://usegalaxy.be)

MAINTENANCE FREE



**PRELOADED
WORKFLOWS**



**TAILORED
SUPPORT**



Tools

- Get instant access to thousands of pre-installed and maintained tools
- Connect to a vast selection of public databases directly from useGalaxy.be
- Run your analysis on the infrastructure of the Vlaams Supercomputer Centrum directly from your web browser. No programming skills required
- Bring your own tools or use Galaxy Interactive Environments

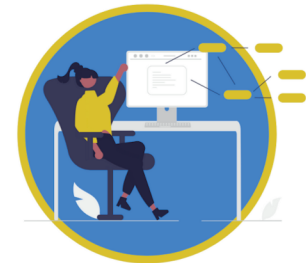
Workflows

- Use community-maintained or build and share your own workflows
- Save time and resources to better focus on your research questions by using preloaded reference datasets and genomes



Reproducibility




- Track and share analyses using histories that capture inputs, parameters and versions of tools
- Build workflows from histories, or from scratch, for versioned and shareable reproducible pipelines



Training and support

- Gain access to hands-on tutorials from the **Galaxy Training Network**
- Collaborate and get support from both national and international communities through the **GalaxyHelp Forum**
- Have on demand dedicated infrastructure for trainees with TlasS: Training Infrastructure as a Service
- Organise workshops tailored to your needs



 galaxy@elixir-belgium.org
 <https://elixir-belgium.org/>
 @ELIXIRnodeBE